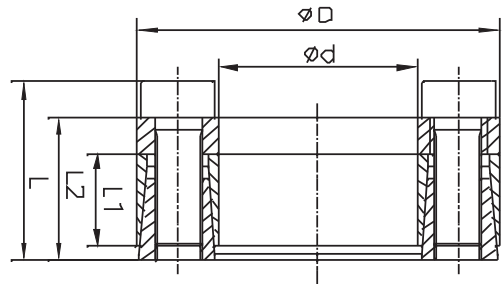




| 차수 Dimensions | | | | | 전달된 축 방향의 힘 Transmitted Axial Force | 전달된 토크 Transmitted Torque | 접촉 압력 Contacting Pressure | | DIN912-12.9 잠금 나사 DIN912-12.9 Locking Screw | | |
|------------------|-----|-----|-----|-----|--|------------------------------|------------------------------|-------------------|--|------------|-------------------------|
| | | | | | | | 축 Shaft | 허브 Hub | 수량 n | 규격 Size | 잠금 토크 Locking Torque |
| d | D | H | H1 | H2 | Ft | Mt | P | P1 | | | Ts |
| mm | mm | mm | mm | mm | KN | Nm | N/mm ² | N/mm ² | Nm | | |
| 360 | 455 | 225 | 203 | 190 | 3208 | 577426 | 173 | 130 | 21 | M22X150 | 930 |
| 380 | 475 | 225 | 203 | 190 | 3361 | 638541 | 172 | 130 | 22 | M22X150 | 930 |
| 400 | 495 | 225 | 203 | 190 | 3666 | 733255 | 178 | 137 | 24 | M22X150 | 930 |
| 420 | 515 | 225 | 203 | 190 | 3666 | 769918 | 169 | 131 | 24 | M22X150 | 930 |
| 440 | 535 | 225 | 203 | 190 | 3666 | 807670 | 162 | 130 | 24 | M22X150 | 930 |
| 460 | 555 | 225 | 203 | 190 | 3666 | 844390 | 155 | 128 | 24 | M22X150 | 930 |
| 480 | 575 | 225 | 203 | 190 | 4275 | 1027650 | 173 | 145 | 28 | M22X150 | 930 |
| 500 | 595 | 225 | 203 | 190 | 4275 | 1071000 | 166 | 140 | 28 | M22X150 | 930 |
| 520 | 615 | 225 | 203 | 190 | 4600 | 1193400 | 171 | 144 | 30 | M22X150 | 930 |
| 540 | 635 | 225 | 203 | 190 | 4600 | 1239300 | 164 | 139 | 30 | M22X150 | 930 |
| 560 | 655 | 225 | 203 | 190 | 4896 | 1371050 | 169 | 144 | 32 | M22X150 | 930 |
| 580 | 675 | 225 | 203 | 190 | 4896 | 1419500 | 163 | 141 | 32 | M22X150 | 930 |
| 600 | 695 | 225 | 203 | 190 | 5040 | 1514700 | 163 | 141 | 33 | M22X150 | 930 |

REACH 20
권장 치수
Recommended Dimensions:
축 : h8 Shaft: h8
허브 : H8 Hub: H8



| 차수 Dimensions | | | | | 전달된 축 방향의 힘 Transmitted Axial Force | 전달된 토크 Transmitted Torque | 접촉 압력 Contacting Pressure | | DIN912-12.9 잠금 나사 DIN912-12.9 Locking Screw | | |
|------------------|-----|------|----|------|--|------------------------------|------------------------------|-------------------|--|------------|-------------------------|
| | | | | | | | 축 Shaft | 허브 Hub | 수량 n | 규격 Size | 잠금 토크 Locking Torque |
| d | D | L | L1 | L2 | Ft | Mt | P | P1 | | | Ts |
| mm | mm | mm | mm | mm | KN | Nm | N/mm ² | N/mm ² | Nm | | |
| 18 | 40 | 24.5 | 12 | 18.5 | 23 | 207 | 204 | 92 | 6 | M6X15 | 15 |
| 19 | 41 | 24.5 | 12 | 18.5 | 23 | 219 | 193 | 89 | 6 | M6X15 | 15 |
| 20 | 42 | 24.5 | 12 | 18.5 | 23 | 230 | 183 | 87 | 6 | M6X15 | 15 |
| 24 | 46 | 24.5 | 12 | 18.5 | 23 | 276 | 153 | 80 | 6 | M6X15 | 15 |
| 25 | 47 | 24.5 | 12 | 18.5 | 31 | 383 | 196 | 104 | 8 | M6X15 | 15 |
| 28 | 50 | 24.5 | 12 | 18.5 | 31 | 429 | 175 | 98 | 8 | M6X15 | 15 |
| 30 | 52 | 24.5 | 12 | 18.5 | 31 | 460 | 163 | 94 | 8 | M6X15 | 15 |
| 35 | 57 | 28 | 15 | 22 | 46 | 805 | 176 | 108 | 12 | M6X15 | 15 |
| 38 | 60 | 28 | 15 | 22 | 46 | 874 | 162 | 103 | 12 | M6X15 | 15 |
| 40 | 62 | 28 | 15 | 22 | 46 | 920 | 154 | 99 | 12 | M6X15 | 15 |
| 42 | 70 | 36 | 18 | 28 | 81 | 1692 | 202 | 121 | 12 | M8X22 | 35 |
| 45 | 73 | 36 | 18 | 28 | 81 | 1813 | 189 | 116 | 12 | M8X22 | 35 |
| 48 | 76 | 36 | 18 | 28 | 81 | 1934 | 177 | 112 | 12 | M8X22 | 35 |
| 50 | 78 | 36 | 18 | 28 | 81 | 2014 | 170 | 109 | 12 | M8X22 | 35 |
| 55 | 83 | 36 | 18 | 28 | 107 | 2952 | 206 | 136 | 16 | M8X22 | 35 |
| 60 | 88 | 36 | 18 | 28 | 107 | 3221 | 188 | 128 | 16 | M8X22 | 35 |
| 70 | 105 | 45 | 22 | 35 | 129 | 4513 | 155 | 103 | 12 | M10X25 | 70 |
| 80 | 115 | 45 | 22 | 35 | 172 | 6877 | 181 | 126 | 16 | M10X25 | 70 |