

**AUTOMATIC**  
**LASER**  
**MARKING MACHINE**

**Model: TM-1000**

Productivity  
Improvement



[www.inkok.co.kr](http://www.inkok.co.kr)

Head Office: Room No. 602, 53, Digitalro, 31Gil, Gurogu, Seoul, Korea,  
08375

TEL : 02)6336-3300~4 FAX : 02)6336-3309

Factory: 133-22, Sagyeokjanggil, Yanggammyung, Hwaseong City,  
Kyeonggido, Korea, 18626

TEL : 031)354-2731 FAX : 031)354-2758

South Office: 68, Chasangro 150Gil, Uichang-gu, Changwon City,  
Kyungsang Namdo

TEL : 055)385-8355 FAX : 055)385-5272



# Machine Specification



Size

1360 X 1560 X 2040



PC Assembled

## Specification

# Power : 220VAC 3 phase 30A

# AIR Supply: Ø8

# Supply Pressure: 6kg/cm<sup>2</sup>

# Design Pressure: 5kg/cm<sup>2</sup>

# Control Specification: Mitsubishi Q Series

# Drive head Specification

: MR-J4W-444B

X Axis : HG-KR43 ( 400W )

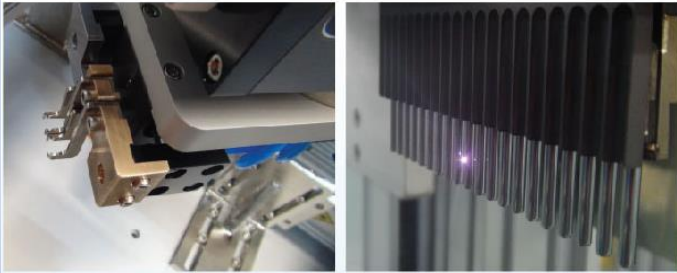
Y Axis : HG-KR43 ( 400W )

Z Axis : HG-KR43B ( 400W )

# **Productivity**

Ø6 Diameter :1,000EA / 15min

# Automatic Marking System

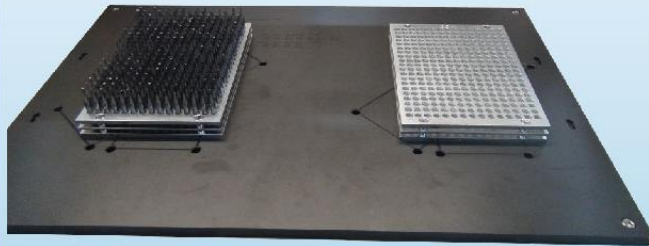


Automatic Multiful Input/output Feed Marking

## Material auto feeding for Marking

### \* Multiful Auto feeding system

- As depending on the material size, it is possible on multiful auto feeding.
- The laser moves with marking action.



5 Axis Tool Grinding Machine Tray Compatibility

## 5 axis tool grinding machine trays are compatible.

- W maker , R maker TRAYs are compatible
- After grinding 5 axis machine, users can move only tray for marking.

# LASER SYSTEM



THIS VERSATILE FIBRE LASER SYSTEM  
ALLOWS MARKING A WIDE RANGE OF  
MATERIALS, FROM FLEXIBLE FOIL AND  
PLASTICS TO METAL.



<b>Div.</b>	<b>MACSA F-9010 / F-9020 Laser Marking</b>
<b>Maker</b>	<b>Macsa ID S.A. (Spain)</b>
<b>Cooling System</b>	<b>Air cooling type</b>
<b>POWER</b>	<b>10W / 20W Fiber, 1.06 micron</b>
<b>MARKING</b>	<b>100x100 / 160x160 mm</b>
<b>Performance</b>	<b>Various data marking(Year, Month, Day, Code, Serial Number etc)</b>
	<b>Logo marking</b>
	<b>Control of Font, Size, Space</b>
	<b>Marking with hold, movement, high speed</b>
<b>Communication</b>	<b>It is possible to choose the 256EA messages.</b>
	<b>It is possible to communicate from outer device with RS232C.</b>
	<b>It is possible to communicate from outer device with Ethernet.</b>
<b>Size, Weight.</b>	<b>Head : 459x108x126mm, 8Kg</b>
	<b>Controller : 454x482x177mm, 26Kg</b>
<b>Voltage</b>	<b>220VAC single-phase + Ground , 50 ~ 60Hz</b>
<b>Power Consumption</b>	<b>500 Watt</b>
<b>Circumstance</b>	<b>5 ~ 40° C, Humidity95% under, non-vibration</b>

